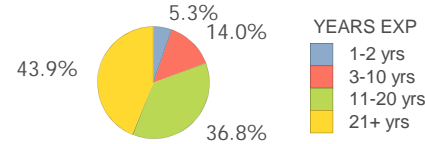


Laurel Hill Primary

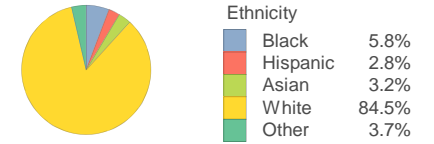
SCHOOL DEMOGRAPHICS

Total 2016-17 Enrollment 1043	Poverty Index 17.3	Gifted Academic N/A	% Arts Participation/Enrollment 99.3%	
Student Retentions 0.6%	% Overage by 1 or more years 5.3%	% English Lang. Learner 3.2%	% Special Education 10.3%	% Plan 504 0.7%

Teacher Experience

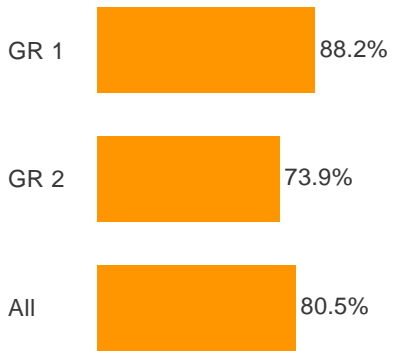


Student Ethnicity



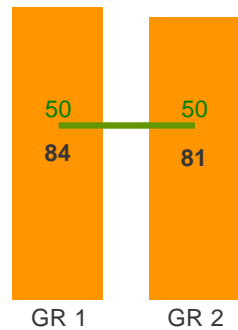
Percent of Students Meeting or Exceeding 1.0 Year Growth

MAP Reading 2016-17



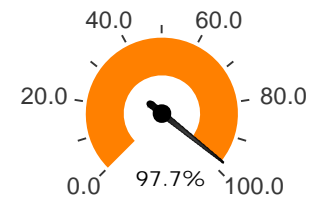
MAP Spring 2017 Median Student Percentile Rank

1-2 Reading Proficiency

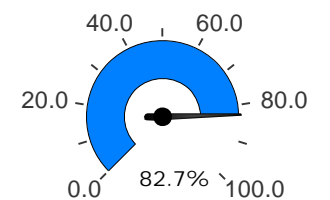


Kindergarten Readiness

Reading (DRA2)* 3+ on text level



Math (MAP) At/Above 40th Percentile

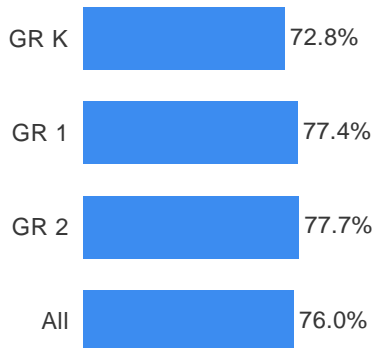


*Other measures available soon

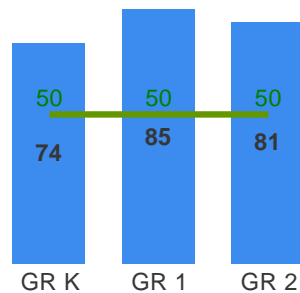
Proficiency: 2017 SC READY ELA and Math

No data to display

MAP Math 2016-17



K-2 Math Proficiency



Green: National Norm (50th Percentile)

Proficiency: 2017 SCPASS Science and Social Studies

No data to display

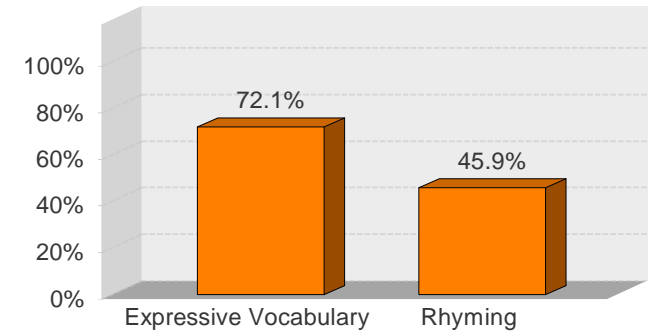
Laurel Hill Primary

RESULTS BY ETHNICITY

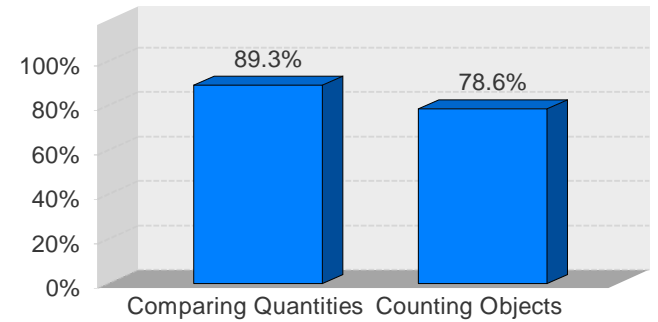
Spring 2017 MAP Percent Meeting or Exceeding 1.0 Year Growth

		Number Tested	Black	Hispanic	White	Other
GR K	Math	Number Tested	10	3	260	17
GR K	Math	Percent Met/Exceeded	30.0%	100.0%	73.5%	82.4%
GR 1	Math	Number Tested	20	10	245	21
GR 1	Math	Percent Met/Exceeded	50.0%	80.0%	80.8%	61.9%
GR 1	Reading	Number Tested	20	10	245	21
GR 1	Reading	Percent Met/Exceeded	80.0%	90.0%	88.6%	47.6%
GR 2	Math	Number Tested	17	11	295	22
GR 2	Math	Percent Met/Exceeded	64.7%	90.9%	78.6%	68.2%
GR 2	Reading	Number Tested	17	11	295	22
GR 2	Reading	Percent Met/Exceeded	58.8%	72.7%	75.3%	22.7%
All	Math	Number Tested	47	24	800	60
All	Math	Percent Met/Exceeded	51.1%	87.5%	77.6%	70.0%
All	Reading	Number Tested	37	21	540	43
All	Reading	Percent Met/Exceeded	70.3%	81.0%	81.3%	79.1%

Pre-Kindergarten Readiness ELA (myIGDI's)



Pre-Kindergarten Readiness Math (myIGDI's)

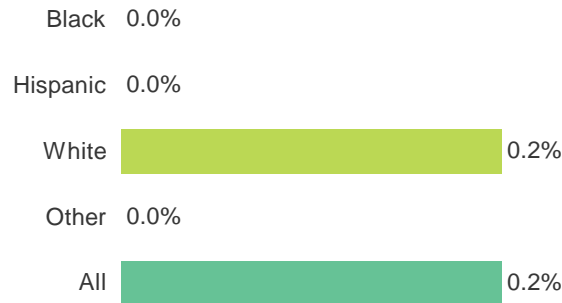


CITIZENSHIP FACTORS

Percent Without Level 2 or 3 Referrals



Out of School Suspension Rates



STUDENT ENGAGEMENT

No data to display