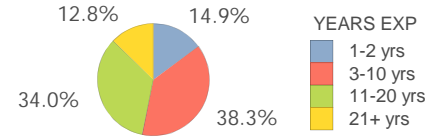


# Ladson Elem

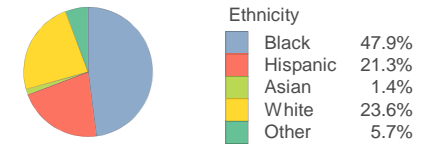
## SCHOOL DEMOGRAPHICS

Total 2016-17 Enrollment 783	Poverty Index 78.9	Gifted Academic 6.3%	% Arts Participation/Enrollment 98.2%	
Student Retentions 1.1%	% Overage by 1 or more years 9.5%	% English Lang. Learner 17.9%	% Special Education 8.7%	% Plan 504 1.0%

## Teacher Experience

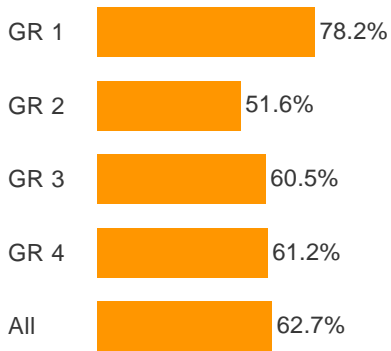


## Student Ethnicity



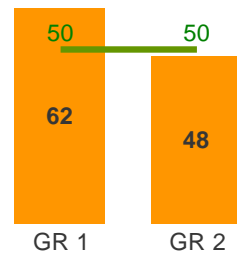
## Percent of Students Meeting or Exceeding 1.0 Year Growth

### MAP Reading 2016-17

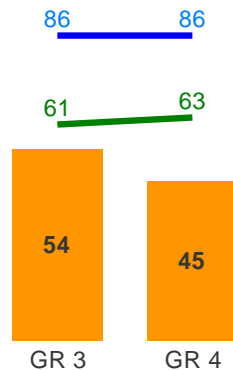


## MAP Spring 2017 Median Student Percentile Rank

### 1-2 Reading Proficiency

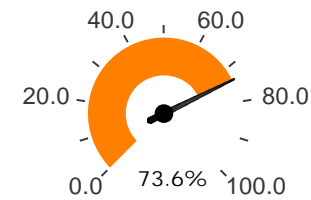


### 3-5 Reading Proficiency

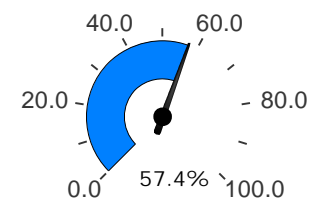


## Kindergarten Readiness

### Reading (DRA2)\* 3+ on text level

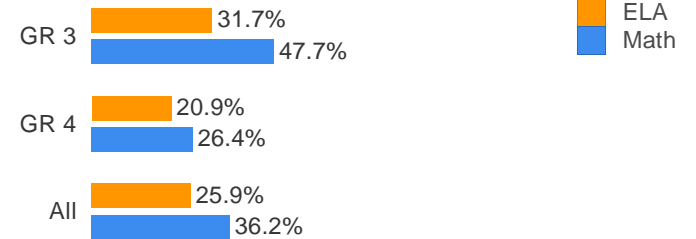


### Math (MAP) At/Above 40th Percentile

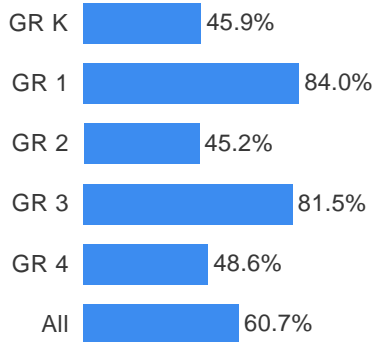


\*Other measures available soon

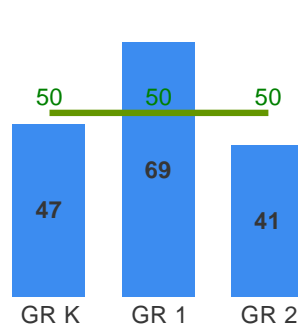
## Proficiency: 2017 SC READY ELA and Math



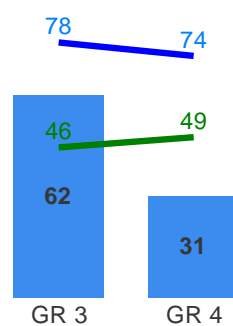
### MAP Math 2016-17



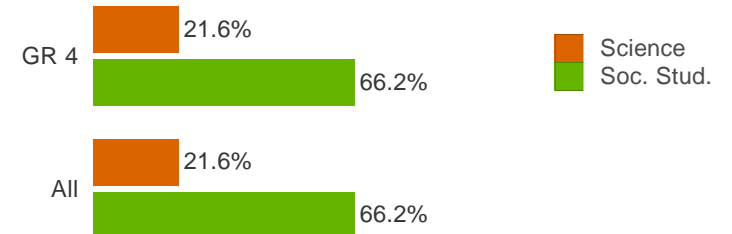
### K-2 Math Proficiency



### 3-5 Math Proficiency



## Proficiency: 2017 SCPASS Science and Social Studies



Green: National Norm (50th Percentile)

Green: Percentile that predicts scoring Meets on SC READY Grade 5

Blue: Percentile that predicts scoring Exceeds on SC READY Grade 5

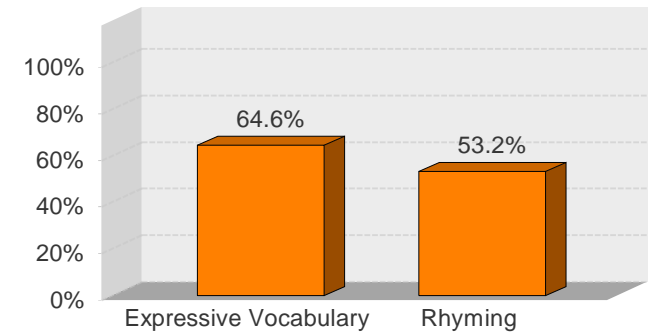
# Ladson Elem

## RESULTS BY ETHNICITY

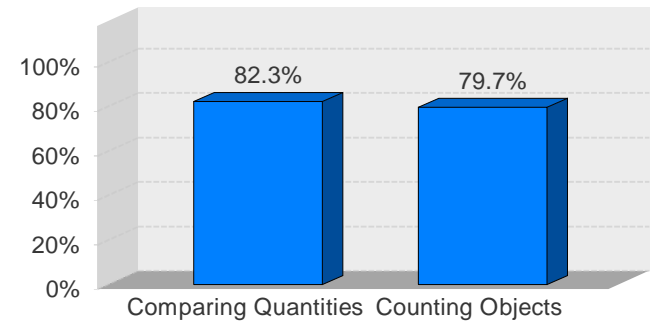
### Spring 2017 MAP Percent Meeting or Exceeding 1.0 Year Growth

		Number Tested	Black	Hispanic	White	Other
GR K	Math	Number Tested	43	23	29	16
GR K	Math	Percent Met/Exceeded	44.2%	43.5%	58.6%	31.3%
GR 1	Math	Number Tested	66	25	23	5
GR 1	Math	Percent Met/Exceeded	80.3%	92.0%	87.0%	80.0%
GR 1	Reading	Number Tested	66	25	23	5
GR 1	Reading	Percent Met/Exceeded	71.2%	80.0%	91.3%	60.0%
GR 2	Math	Number Tested	46	33	37	8
GR 2	Math	Percent Met/Exceeded	56.5%	30.3%	45.9%	37.5%
GR 2	Reading	Number Tested	46	33	37	8
GR 2	Reading	Percent Met/Exceeded	56.5%	45.5%	51.4%	37.5%
GR 3	Math	Number Tested	55	22	32	8
GR 3	Math	Percent Met/Exceeded	78.2%	100.0%	81.3%	62.5%
GR 3	Reading	Number Tested	55	22	32	8
GR 3	Reading	Percent Met/Exceeded	60.0%	54.5%	65.6%	50.0%
GR 4	Math	Number Tested	79	30	23	8
GR 4	Math	Percent Met/Exceeded	40.5%	53.3%	65.2%	62.5%
GR 4	Reading	Number Tested	78	30	23	8
GR 4	Reading	Percent Met/Exceeded	56.4%	53.3%	82.6%	50.0%
All	Math	Number Tested	289	133	144	45
All	Math	Percent Met/Exceeded	59.9%	60.9%	66.0%	48.9%
All	Reading	Number Tested	245	110	115	29
All	Reading	Percent Met/Exceeded	61.2%	57.3%	69.6%	69.0%

### Pre-Kindergarten Readiness ELA (myIGDI's)

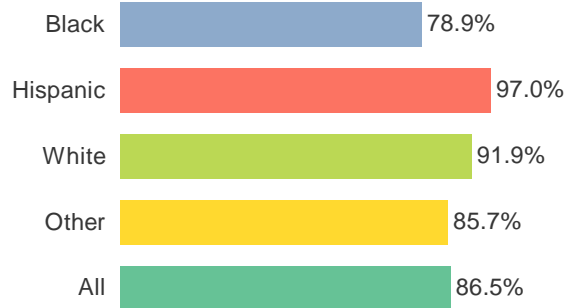


### Pre-Kindergarten Readiness Math (myIGDI's)

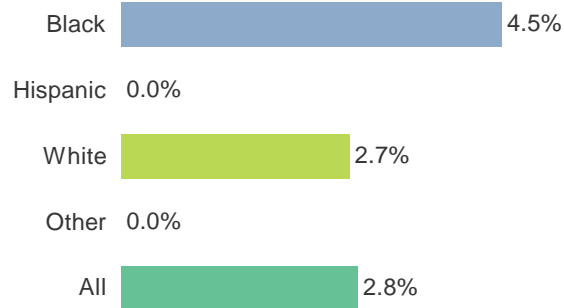


## CITIZENSHIP FACTORS

### Percent Without Level 2 or 3 Referrals



### Out of School Suspension Rates



## STUDENT ENGAGEMENT

### Student Satisfaction with Learning Environment

